

Mayflower

The Newsletter of the Garden Club Federation of Massachusetts



September 2021

Welcome to the new Mayflower!
Please click "[view entire message](#)"
at the bottom of this email.

Please forward this to your membership.



Looking Ahead

- Presidents, please bring 3-4 copies of your club's yearbook to your district director at your Fall Coffee.
- Deadline to [register](#) for the Landscape Design School: Oct 10
- [Topsfield Fair](#) October 1-11
- Berkshire Botanical Garden's [Harvest Festival](#) Oct. 9-10
- [GCFM Standard Flower Show](#) at Tower Hill Oct 29-31.

Meet the New President

Jill Malcolm President 2021-2023



Jill is the President of the Garden Club Federation of Massachusetts. She joined the GCFM Board in 2015 as the Central South District Director. She was nominated to the position of Corresponding Secretary for the Executive Board in 2017 and then to First Vice President under Bonnie Rosenthal. She has served as the registrar for the current Flower Show School series and has served on the Awards and Investment committees.

Jill has been a member of the **Holliston Garden Club** since 1997. She has held several board positions there including two terms as President. Jill is a Master Gardener and has served as co-chair of Holliston in Bloom, a civic group dedicated to town beautification and community education. She also was the Chairperson of Floral Design Division 2 at the Boston Flower Show for two years and is the staging chair for the Tower Hill Flower Show.

Jill was born in New York City and spent her childhood in Norwalk, CT. She moved to Boston to attend Emmanuel College where she received her BA and earned her JD from Suffolk University Law School. Jill went on to work for John Hancock Financial Services in Boston in the investment marketing and strategic planning departments for 37 years.

Jill has been married to husband Tom for 36 years. They have two sons, a wonderful daughter-in-law, and two dogs.

Jill's presidency theme is "Plant together, play together, grow together." She strongly believes that our commonality of horticultural interest binds us all and that we are more effective and creative when we all work together.

Dear Members,

September has always been my time for new beginnings. I think it started when I was getting the boys ready to go back to school with all their new supplies and clothes. It just felt like a good time for a fresh start on other things as well. The boys are now men and long past school but I still feel that little boost of energy in September that leads to getting things done and starting new projects.

I'm happy to say that that renewed energy is happening in the GCFM as well. We had our first board meeting on September 1 and it was exciting to hear the plans for activities and programs for the next year. Some things have changed – Back to Basics and Design Mornings have merged into a Design Series aimed at a wide variety of floral design skill levels. Some of these workshops will be in person and some will be virtual but all will be educational. Hort Morning will start up in 2022 with 2 virtual lectures and hopefully a field trip or two to some interesting garden sites. Keep your eyes on GCFM.org for more information

The fall will be a very busy time for all of us. The District Directors are holding their annual fall meetings in September and October. Several members of the GCFM Board will attend these meetings to provide perspective and information on important topics for club officers. Don't miss out!

There are two wonderful flower shows coming up in October. The Topsfield Fair will be held October 1 -11 and offers two design sessions as well as horticulture. The schedule for Topsfield is not full as of this writing so check it out on our website. The Central North and South Districts are sponsoring the Tower Hill flower show on October 29-31. The floral design classes are full for this one but there are opportunities in Horticulture. And if October wasn't busy enough, Landscape Design School is back! The classes will be offered virtually October 25-26.

I hope all of your clubs are excited to get back together this fall. I have been invited to several events and hope to see more as the season progresses. It's been a wonder to see all of the energy that many of you put into both your civic and club focused activities. Keep reading to hear more about what your fellow garden clubs have done over the summer and again check out the website to see what they have planned for the fall.

Remember to Plant together, Play together, Grow together!

Your New GCFM Board

First Vice President - Marjorie Dienhart



Gardening is in my blood. I connect with nature and I love digging in the dirt. It gives me immeasurable pleasure and I only wish I could do it year round. After having lived in Germany for 9 years working in Frankfurt, and in Boston another 20, with 14 years in the school system in between, I finally found the time to make it to a local evening garden club meeting of interest to me. After 2 visits, I was a member of the Evening Garden Club of

Plymouth. That autumn, I was voted in as President of the club and held that position for 3 years.

The following 2 years I was invited to be Assistant Director of the SE District (2014-2016). Such a pleasurable experience. At that time I became a member of the Aptucxet

Garden Club of Bourne. In 2021, I moved to Yarmouth Port on Cape Cod and am currently a member of the **Village Garden Club of Dennis**, the closest one to my home. I served as District Director of the Southeastern District 2019-2021. What an interesting term! Sadly, due to Covid, most clubs shied away from in person meetings and scaled back activities. I missed going out into the community to meet the members who really make things happen. However, I was so proud of the remarkable achievements my clubs had despite Covid.

I have contracted poison ivy more times than I want to share and I have chronic Lyme Disease after 3 bouts in 2 years. It doesn't keep me out of the garden but I am more cautious. I am retired now and it is a joy to be able to putz a bit each day. The only interesting situation I have now is a lot of creative ideas come into my head while watering and that just leads to more digging. I do landscaping and landscape design upon request and thoroughly enjoy the smiles it brings to the owners.

I look forward to an exciting term as 1st VP and the opportunity to meet the dynamic District Directors I will oversee.

Second Vice President - Ann Webster

Ann is taking on this role after serving as Treasurer of the Federation since 2015. She comes from the **Lexington Field and Garden Club**, which she joined in 2005 following a career in banking, marketing, and management consulting. At LFGC she has reveled in the broad and deep friendships, shared purposes and continual learning that are the magic of garden clubs everywhere. She's also had a full range of responsibilities, including those of President for three years and Treasurer for four. She continues to co-chair or participate in multiple activities, committees and subgroups of her club and, through GCFM, loves hearing and sharing how other clubs approach similar work and fun. Her underperforming gardens and occasional floral designs certainly don't reflect all that she has learned over the years, but she is grateful for her more informed eye and is now enjoying Landscape Design and Flower Show Schools. Other favorite activities include hanging out and going on adventures with her husband, Chet, and swimming in and helping run her neighborhood pool, of which she's been treasurer for over 30 years.



Recording Secretary - Joan Butler

Joan has held the position of Recording Secretary for the Landscape Design Council, Judges' Council, and the **Holliston Garden Club**. Joan is a past President of the Landscape Design Council and has held to two positions on the GCFM Board: Civic Development Chair and chair of the Awards Committee. She also chaired Civic Development for the New England Region and Division 1 Floral Design

for two years at the Boston Flower Show.

Joan believes that one of the best things she has done was to join a garden club. She joined the **Holliston Garden Club** in 2001 and found herself among kindred spirits. Over the years, she has held many positions within the club, including Co-President. She attended the schools offered through GCFM and is a Master Landscape Design Consultant, a Master Gardening Consultant, and an accredited Flower Show Judge. This year she hopes to complete her path in Environmental Studies School.

Joan grew up in New Jersey. She and her brother competed at curling clubs throughout the northeast. She earned a degree in Geology from UMass Amherst and met her husband, Brian, there – a fellow geology major. They have three wonderful daughters, two sons-in-law, a significant other, and three incredible grandchildren.

Joan is an avid gardener, a Certified Master Gardener, holds a certificate in Landscape Management from UMass Extension Green School, and has worked for many years as a horticulturalist at Weston Nurseries. She and a friend present horticulture and design programs to garden clubs and libraries in the northeast. She is the Horticulture Chair for the 2021 Tower Hill Flower Show.

Corresponding Secretary - Karen Ballou

I have been a member of the **Southbridge Garden Club** for 18 years and recently retired as president after 10 years in that role. I have had the luxury of “growing up” in a club with creative, curious and nurturing women and strongly believe gardening is always better with a friend! I am looking forward to help shape the Federation going forward continuing to cheerlead for the South Central district. I have completed the garden school, working my way through the landscape design school and contemplating the floral judge school. However I really prefer playing in the dirt, to making arrangements. With a child in collage my husband and I spend our time figuring out ways to outwit the local wild life that make out wooded lot in western MA home, and balancing garden visits with local brewery trips!



Treasurer - Beate Bolan



Beate is has spent most of her working career as Chief Financial Officer and Chief Compliance Officer of a Manhattan based institutional brokerage firm. Now mostly retired, she runs her own compliance consulting firm. Growing up with parents that loved to garden, Beate developed an early passion for gardening. She became a Master Gardener in 2017 and actively volunteers in gardening projects including the Springfield Museums, the Ted Geisel/Seuss House, and several gardens in Springfield's Forest Park. She is an active member and past President of the **Springfield Garden Club** and lives and gardens in Springfield with her partner, Matt Forte.

Parliamentarian - Andrea Little

Andrea was born and raised in Massachusetts and majored in Business Administration and Management. She met and married Bruce her husband at Marine Corps Air Station, Beaufort SC, thus starting her career working for the United States Marine Corps as a civil servant in Base Administration for the Marine Corps Exchange System and as a MCAS El Toro CA Equal Opportunity Employment counselor, serving the Army, Navy, Air Force and Marines. She has traveled all over the world for and with garden clubs at all levels, business & pleasure. Andrea was able to finally start her history with garden clubs in Gainesville, Florida in 1989, by attending a Parliamentary Law Unit Study Group where she met a member of the Gainesville Garden club. She has held leadership positions at several levels of Garden Club in Florida and Massachusetts to include State Parliamentarian for Florida and Massachusetts (currently serving her 4th term as GCFM Parliamentarian) at the local, state and region levels. She is and has been a member of NAP for 45 years and has held state offices of recording & corresponding secretary. She continues her studies in Parliamentary Law on a continuous basis. Andrea is an accomplished Master Flower Show Judge and Floral Designer and has been published in DESIGN DIMENSIONS (CFAA); CONCEPTS (AFA); Florida VISION OF BEAUTY calendars; exhibited at WAFA in Boston; Museum of Fine Arts, Boston; Philadelphia Academy of Fine Arts; Worcester Art Museum; Boston & Newport Flower Shows; and judged at the 2014 – 2017 Philadelphia Flower Shows. She has presented several demonstrations and workshops in floral design in several states. Andrea considers that being appointed NGC Blue Star & Gold Star Families Memorial Marker Chairman at the 2013 National Convention by President Linda Nelson as one of the highest honors in her garden club career, serving for six years. Her love and devotion to our Armed Forces is never ending, ensuring that our Military Service Personnel are never forgotten. You will always know that Andrea is in the building by hearing SEMPER FI – SEMPER FIDELIS – ALWAYS FAITHFUL – which clearly defines her devotion to all projects and assignments. Andrea is a current member of the following organizations: NGC, Inc., NAP, CFAA, WAFA, NFA (Second Vice President and Membership) Florida and Massachusetts Flower Show Judges' Councils.



The New District Directors

Middlesex - Kathy Leva

I have been the district director for Middlesex once before and am now back by popular request. I retired from the MGH Boston after working 35 years in the medical field.

Currently working part time as a florist and in the Wilmington school system. I am a Nationally Accredited Flower Show Judge. Designed or entered Horticulture in The Boston Flower Show, Topsfield and Marshfield Fairs, Tower Hill Flower Show and Art In Bloom at the MFA. Presented floral demonstrations and workshops spreading the art of flowers. Member of **The Lexington Field and Garden Club** and **The Town and Country Garden Club of Ipswich**. Volunteer at The Crane Estate in Ipswich on the Gardening Team.

In my spare time I enjoy spending time in my gardens, raising my flock of chickens, and walking with our Blue Great Dane Dog named Thor.



Central North - Lynn Noland

I was born and raised in New Jersey and have been in garden clubs in NY (79-91) and MA (94-present). Before I adapted to colder climate gardens, I gardened on the Jersey shore. I like to walk, garden-especially pruning shrubs, golf, and sing. I am the historian for the **Sudbury Garden Club**. I have been President or Co-President at 3 different times, VP, program chair, plant sale chair. I also take care of a traffic island in North SudThree years ago after attending the June annual meeting of GCFM Joy DiMaggio and I saw the Blue Star Booth, we started the wheels turning to create a Blue Star Garden. Between the Thursday Garden Club and Sudbury Garden Club, We applied for a Blue Star Garden plaque, which we placed on a rock in the Garden in Sudbury Town Center, Grinnell Park.

My idea was for it to be red, white and blue with plant material in all those colors. It is a 3 season bloom with winter interest, which would honor all our military across the USA, past, present and future. The garden is maintained by members from each club.



Metrowest - Claudia Perkins Ticktin

Sonia Hale (left) and I (right) are co-directing the MetroWest District this term. She and I have been members of the **Wellesley Gardeners' Guild** in Wellesley for over ten and five years respectively and have each served on several committees. I've worked on planting committees for the Wellesley Post Office and Wellesley Free Library, and most recently VP-Programs Committee. I enjoy bringing fresh, new programming to our club, and working with my fabulous team of creative and collaborative committee members. In 2014, I re-located to Wellesley from Southern California with my husband's job in the biotech industry, arriving just in time for a year of record snowstorms. Boston wasn't entirely unfamiliar to me because I had completed my undergrad at Boston University many years ago. In my prior life, before becoming a stay-at-home mom in Southern California, I was a corporate and securities attorney in New York City for 15 years. After I moved to Wellesley and my children were off to college, I returned to work as a Realtor with William Raveis-Wellesley. I find that my clients invariably appreciate me as a "trusted real estate advisor" and value my unique skillset of corporate legal experience and real estate expertise. I also have a grey cat named Smokey who enjoys my New England garden in all of its glorious seasons!



Northern - Susan Schumacher

Susan R. Schumacher was born and raised in Buffalo, New York. She relocated in May of 1978 to the New England area, making her first home in Andover, MA. She has a life-long interest in gardening and

horticulture and is still tending a large garden... but not so large after the attack of the rabbits! Susan has been in the travel industry for her entire working career. She owned and operated Groups, Inc. Professional Tour Operator for 32 years, only retiring when the Pandemic hit. For the last 5 years of that career she worked with garden centers to design and operate motorcoach tours to famous gardens of the northeast. She is active in the **Haverhill Garden Club** and volunteers at her church and several other causes. She will enjoy working with her 21 garden clubs in the Northern District GCFM for the next two years.



NorthEastern - Kim Edwards

Raised in Lynn and now resides with her husband in Swampscott, she was introduced to flowers and gardening at a young age by her two best friends. One family owned a florist and grew geraniums in their greenhouses along with plots of mums. Running through the plots and hiding in the greenhouses was their way to pass time during the summer. The other's grandfather grew not one but two backyards of every vegetable and herb. Kim is still brought back to her childhood anytime she smells Greek basil.



Upon retiring she has rekindled her joy of being around gardens and flowers. She joined the **Nahant Garden Club** and has held various positions: Board Director to Chair/Co-Chairs of various committees: Programs, Yearbook, Website, Floral and Holiday Workshops and the Holiday House Tour Boutique, Volunteered as a program hostess and at the annual plant sale.

Anywhere Kim and her husband travel to there is always a stop to at least one garden or flower exchange. She looks forward to 2022 to attend the Keukenhof Flower Parade outside of Amsterdam.

South Shore - Carol Hartnett

Hi, I am Carol Hartnett and thrilled to be working with the South Shore Garden Clubs as District Director. I have been a member of the **Kingston Garden Club** and have served as Recording Secretary and President for the past 3 years. I am very interested in attending South Shore club functions and working with each club. I have attended the Federation Annual Meetings and will attend my third New England Federation of Garden Clubs in Wells, Maine, in October which allows me to share with other state clubs ideas and issues that we are all facing. My hope is that in-person meetings will be enjoyed by our members this year.



Southeastern - Linda O'Neil

I grew up in Franklin, MA, when it was rural. My parents and all members of both families were backyard gardeners. Being part of the "Go outside and play" generation was easy in 8 acres of woods! However, we spent the summers in Plymouth. After college in North Adams, MA, my husband and I bought a house in Bellingham where I taught First grade. Having an acre of property at that house and the next, we raised our daughter and son with gardening and lots of grass to mow. When I retired from teaching preschool for over 30 years and John retired from the partnership at the CPA firm; we took down the family cottage on Big Sandy Pond and built our current home, then I joined **The Plymouth Garden Club**. I volunteered to "do programs" and thereby became first VP and subsequently President for 4 years. We are lucky grandparents to Logan, Brecken, and Aberlie (Abby) who live in PA with our daughter, Julie, and her husband, Michael. So now I (MOSTLY) grow flowers and friends instead of children!



Central South - Nancy Martin

Fourteen years ago, I joined the **Framingham Garden Club**, after 37 years teaching 4th & 5th grade. Garden Club has offered me many opportunities to learn while making new friends. Serving as FGC President, I know how dedicated garden club members are. As a floral designer I have had the privilege of creating designs for Art in Bloom at the MFA and Flora in Winter at WAM. Traveling throughout the US, Europe, Central & South America, and Southern Africa; my husband and I have visited gardens in all parts of the world. Growing up north of Pittsburgh, I inherited my grandfather's green thumb. I enjoy spending time in my gardening, reading, and golfing with the 'Chix'. I look forward to meeting more of our members as the South Central District Director. Nancy Martin

This is me, standing with the bees in my hydrangea garden.



Annual Meeting Highlights

The June 2, 2021, Garden Club Federation of Massachusetts, Inc. Annual Meeting, held on ZOOM this year, was called to order at 10:30 AM by First Vice President, Jill Malcolm. She introduced former presidents in attendance and welcomed the new District Directors.

After reports from the officers, Treasurer, and Parliamentarian, Jill introduced **Wim Nijenberg**, widower of Caroline. who presented a sterling silver pin with emeralds representing Caroline's love of green things - horticulture and frog – to Marjorie Dienhart, incoming First Vice President.

Former President, **Diane Bullock**, welcomed Dr. Terrence Joyce, son of Sandi Joyce, our president from 1999-2001. **Dr. Joyce** announced the formation of the Sandra M. Joyce Landscape Beautification Grants to support horticulture.

Our Keynote Speaker, **Uli Lorimer**, Director of Horticulture at the Native Plant Trust, then spoke on the Benefits of Ecological Horticulture followed by a presentation by **Ann Cairns**, President of the Shrewsbury Garden Club, with highlights of the Native Plant Challenge.

After the Official Election of GCFM Officers and District Directors, Mary Warshauer, President of National Garden Clubs installed each officer and incoming District Directors were introduced by President, Jill Malcolm. Our new Preident announced that she will continue the Native Plant Challenge as her President's Project. Jill's theme is Play Together, Plant Together, Grow Together.

[Click Here to Watch the Annual Meeting](#)

Garden Clubs at Work

Garden Clubs all over the state have been hard at work (fun) touring gardens, planting in their communities, and holding workshops. Here are a few ways GCFM member clubs have spent their summer.

The **West Springfield GC** had Dan Ziamak talk on “Hydrangeas for All” in August. They are preparing to decorate Storowton Village for Christmas again this year and have begun drying plants.

Duxbury Rural Historical Society awarded their Lands and Gardens Award to The **Community Garden Club of Duxbury** as “a long standing partnership, these amazing volunteers donate their labor, resources, goods and money fundraised to keep both the DRHS gardens and the Town of Duxbury beautiful.” Also the DRHS Volunteer of the Year Award was given to one of the club’s members, Mary Ott. A special award, the Society said, “The finest of managers, Mary Co-Chairs the Historic Gardens Committee and sits on the Properties Committee. In addition to countless hours in our gardens, she was this year engaged with a number of important projects, including preparing the gardens at King Caesar House for filming and overseeing clean out projects. Mary’s energy and eye for design are unparalleled and we are grateful to have her on our side.”

In April, the **Waltham GC** had a guided tour through the open fields, pond system, gardens, and greenhouse complex resting on 30 acres of the Lyman Estate grounds in Waltham, while they learned about its rich history. In May they held a Club Plant Sale and Seed Giveaway at the Kennedy Middle School to raise funds for the club. Also in May the club spent an afternoon walking through the Piety Corner Historic Area, one of the oldest settled areas of Waltham, which includes the city’s largest single concentration of well-preserved 19th and early 20th century homes. They also spent a day in May planting spring flowers on Waltham Common.



The **Wellesley Gardeners' Guild** had some fun removing the root bound forsythias from the planters in front of the Wellesley Free Library. The library planters are going to be gorgeous and lush in time for the Boston Marathon and the Library’s Re-Opening in October.

The **Thursday Garden Club of Sudbury** has been busy with their general meetings and a variety of speakers on Zoom. The most recent speaker was Liza Gardner Walsh, a school librarian from Maine, who has written several books on Fairy Houses and Gardens. She presented a workshop on how to build a fairy house or garden using both items from nature and craft materials. This was in preparation for their Fairy Garden Trail

fundraiser that featured 30 fairy gardens made by members and placed on a woodland trail at Sudbury's Camp Sewataro (*Photo is a fairy house created by Donna Moy-Bruno.*)



The **Springfield GC** held its "Cities of Gardens Tour" in August featuring six exceptional gardens plus featured gardens in Forest Park and at the Springfield Museums Quadrangle. To the left is the rock garden in Forest Park that is maintained by the club.

On the northeast end of the state the **Danvers Garden Club** celebrated the club's 90th anniversary in June by holding a garden tour entitled "Enjoying Neighborhood Gardens".



In the fall of 2020, the **Belmont Garden Club** planted 10,000 daffodil bulbs throughout Belmont, primarily on Concord Avenue close to the Cambridge line and the Belmont Center delta, where the club takes care of the horse trough. This spring they got to see the results of their hard work when the daffodils bloomed and the town enjoyed the spring beauty.

Hough's Neck Garden Club in Quincy cleaned up at Veteran's Memorial in May and held a plant auction in June to raise funds.





Manchester's May meeting was a special walking tour of Long Hill Estate in Beverly led by Jack Ingram of Bartlett Tree Experts and Dan Bouchard, Senior Horticulturalist of The Trustees. Members were introduced to many rare and unusual specimens planted by the Sedgwick family over one hundred years ago.

Hyannis Garden Club held a flower show along with their Annual Meeting in June. Although they celebrated their 90th anniversary in 2020, the flower show entitled "Through the Years" took a look back at the club's history. Education Award went to "Shine a Light on Native Plants." Class 5, a Creative Design, entitled "1987 Gardens at Guyer Barn" by Shirley Minot.



Every newsletter will feature the doings of GCFM garden clubs. Please submit any events, workshops, field trips, community service, fundraisers that you would like to share with the wider GCFM community to joanminklei@gmail.com for inclusion in the next edition of the Mayflower. THANK YOU!

Featured Native Plant: Common Ninebark

Physocarpus opulifolius

Common Ninebark, *physocarpus opulifolius*, also known as Common Ninebark or Eastern Ninebark, Atlantic ninebark, is a species of flowering plant in the rose family Rosaceae that is native to central and eastern North America. The genus name *Physocarpus* comes from the Greek for "bladder fruit", referring to the inflated fruits of some species. The common name ninebark refers to the peeling bark of mature branches.

Common Ninebark is a mounded-shaped, deciduous shrub that is multi-stemmed and which is low, spreading and with foliage strongly resembling that of a fern. It flourishes in marginal



(inflated seed capsules). The leaves are ovate to rounded, usually 3-5 lobed (to 4" long) and dull green in summer changing to an undistinguished yellow in fall. It is easily grown in average, slightly acidic, dry to medium moisture, well-drained soil in full sun to part shade. It is best grown in full sun in the northern part of the country. It likes a pH of 6.8-7.2. It tolerates: drought,

places, such as rocky barren habitats with acidic soil; power line rights-of-way, and rocky outcrops. This is because it has teamed up with bacteria that turn atmospheric nitrogen into a form that the plant can use. It is noted for its exfoliating bark which peels in strips to reveal several layers of reddish to light brown inner bark (hence the common name of ninebark). Bark provides winter interest, but is usually hidden by the foliage during the growing season.

Ninebark is fast growing and grows well in Zones 2 to 8. It gets from five to eight feet high and four to six feet wide. It produces small pink or white, five-petaled flowers appearing in dense, flat, rounded, 1-2" diameter, spirea-like clusters (corymbs) from May to June. Flowers give way to drooping clusters of reddish fruit

erosion, clay soil, dry soil, wet soil, shallow-rocky soil, and black walnut. Prune as needed immediately after bloom and no later than mid-August. Plants may be cut close to the ground in winter to rejuvenate. You can propagate by fall-sown seed or semi-hardwood cuttings with or without hormone treatment.

It is ideal for naturalizing or for use in poor sandy soils. It also works well as a hedge and in mass as a shrub border. It can act as a screen or for erosion control on banks. It is also grown for its ornamental foliage. It attracts birds and has some special value to native honey bees. It is the larval host for several variety moths. It is said to be deer resistant.

The problems that may occasionally occur are fire blight, powdery mildew and leafspot.

Important Forms and Links

- [GCFM Awards for 2020](#)
- Scholarship Winners - to come next issue
- [GCFM Scholarship Application](#) (due March 1)
- [GCFM State Awards Application](#)
- [Blue Star Memorial Information](#)
- [Presidents Pins Form](#)
- Club Insurance Information - to come, info at the Fall coffees

[Click Here for the main GCFM Website](#)

Featured Article

Climate Change is Accelerating: What's a Person To Do?

By Maria Bartlett, Environmental Awareness Chair

Have you read about the IPCC report released in August? The Intergovernmental Panel on Climate Change, set up by the UN in 1988, reports on the most current scientific information about climate change. The report said, in no uncertain terms, that climate change is "widespread, rapid, and intensifying" and related to human activity.

What are we to do? I believe we all need to move our lifestyles to Net Zero

greenhouse gas emissions. Here are some ways to do this:

Electrify: As the electric grid becomes “greener” with more solar and wind power (and less coal, gas and oil), we need to convert to all-electric in our power use:

- In the kitchen, install an induction cooktop in place of gas or conventional electric.
- When replacing your heating system, convert to heat pumps.
- When replacing your clothes dryer, buy a heat pump dryer.
- For hot water, install a heat pump hot water heater.
- Buying a new car? Buy an electric vehicle.
- For yard equipment, use an electric (rechargeable) mower and leaf blower.

Generate your own electricity: Install solar panels on your roofs or ground-mount solar panels in your yard.

Cut down on other uses of fossil fuels...they also generate greenhouse gas emissions.

- Stop using chemical pesticides and synthetic fertilizers...all are petroleum based.
- Reduce your use of plastics, especially single use bags, straws, cups, bottles...all are petroleum based. Ditch the bottled water...those bottles are not recycled.

Divert/reduce organic materials....they release methane when in landfills/feedlots and CO₂/toxins when burned in incinerators:

- Compost kitchen and yard waste at home or use a pick-up service.
- Eat less meat...methane is released by animal waste.
- Keep an eye out for tax credits and rebates for the electrification equipment like heat pumps and solar systems. Make a plan to go electric and commit to one project this year!

2021 Program Workshop Speakers' Gallery

Attention Program Chairs

Looking for a great speaker for your next program or workshop?

Click the link below to access the
2021 Program Speakers Gallery on the GCFM website.

[Click here for the GCFM Speakers' Gallery](#)

In Memorium

Hazel Schroder

June 23, 1941 - June 12, 2021



Hazel was born in the Buffalo, NY, area. Her brother and his family still live there. Hazel was very fond of her brother's two daughters and was close to them. Hazel moved to Massachusetts where she and her ex-husband had a booth at a local farmer's market. She was a teacher first in Wayland and then taught chemistry at Shrewsbury High School until her retirement.

Hazel was a member of the **Greenleaf Garden Club of Milford**. She was an extremely active member and held many offices, including President (1999-2000, 2002-2004, 2008-2010), Corresponding Secretary, Awards, Newsletter and Publicity Chair and also Photographer. She traveled with other GGC members on NGC trips to Iceland, Panama, and Brazil. While in Panama and Brazil, she judged an International Flower Show.

After she retired from teaching, Hazel went to Flower Show School to become a judge and would have become a Master Judge after one more symposium. She was a beautiful floral designer. Hazel was a member of the Massachusetts Judges Council, and a member of the Central Massachusetts Flower Arranging Study Group. She participated in the MFA Art in Bloom. She had been the lead judge for the New England Dahlia Society's Floral Arts show. She chaired the Tower Hill Flower Show many times; 2010-New England Journey; 2012-Through the Garden Gate; 2018-An American Icon: The Apple, which won the Ruth Wallack Schedule Award and the Jane Bubier Flower Show Award. She was to chair again in 2020, but the show was cancelled and so had agreed to chair for 2021 for which she wrote the schedule.

Hazel served on the Federation board as Co-Chairman Hospitality and also Meetings Committee – Educational Displays (2007-2009); Central South District Director (2009-2011), Nominating Committee (2011-2013) GCFM Board Hospitality (2015-2017), and Corresponding Secretary (2019-2021).

Hazel loved traveling, but she was happiest in the garden with her camera.

New England Garden Club News

**4th ANNUAL MEETING OF NEW ENGLAND GARDEN CLUBS, INC.
OCTOBER 12-13, 2021
VILLAGE BY THE SEA CONFERENCE CENTER
1373 POST ROAD WELLS, MAINE**

The Garden Club Federation of Maine (GCFM) will host the New England Garden Clubs, Inc. 4th Annual Meeting, October 12-13, in Wells, Maine. National Garden Clubs, Inc. (NGC) President Mary Warshauer will attend.

Village by the Sea is a Condominium Conference Center and attendees will be able to stay for low negotiated rates (\$99-149) with the second night half off. Reservations are now available by contacting Village by the Sea at 1-800-

444-8862. The center is adjacent to the Rachel Carson National Wildlife Refuge.

Planned Highlights:

- A cocktail reception to honor NGC President Mary Warshauer and NEGC Region Director Suzanne McCance.
- A Small Standard Flower Show coordinated by Maine Judges Council.
- The keynote dinner speaker will be Drew Dumsch, President/CEO of The Ecology School in Saco, Maine and the 2021 National Nature Center Administrator of the Year.
- A photography program led by New Hampshire photographer, Arabella Dane, former Chairman of the NGC's Photography Committee.
- NEGC Region Director, Suzanne McCance, (a former GCFM president!) will preside over the Annual Meeting and luncheon.
- For those who decide to stay a second night, there will be opportunities to tour Kennebunkport, Ogunquit, and York.

The schedule can be viewed [here](#).

The registration form can be downloaded [here](#).

NATIONAL GARDEN CLUB News

The National Gardener magazine goes online!

National Garden Clubs Inc. announces the exciting transition of The National Gardener, the 91-year-old quarterly flagship magazine of NGC, from a print publication to a digital platform. This change debuts with the **summer 2021** edition. The new publication, along with past issues of the magazine, will continue to be available at www.gardenclub.org. To subscribe and receive The National Gardener directly to your inbox, visit The National Gardener page on the NGC website and complete the easy subscription form. You may unsubscribe at any time and subscriptions are always *FREE*.

[Subscribe to The National Gardener online \(it's free!\)](#)

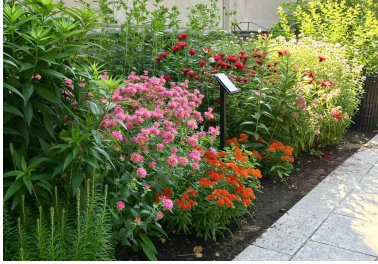
National Garden Clubs publishes books for children to begin a lifelong love of gardening and caring for the environment. Network with Nature encourages children to step away from screens and get outside. The Frightened Frog describes how the environment is changing from his point of view. The Saved Seed describes a pumpkin seed's journey from one Halloween to the next. All written by Brenda Moore.

Order through NGC's [ONLINE STORE](#).

The Native Plant Challenge

Native plant resources to check out:

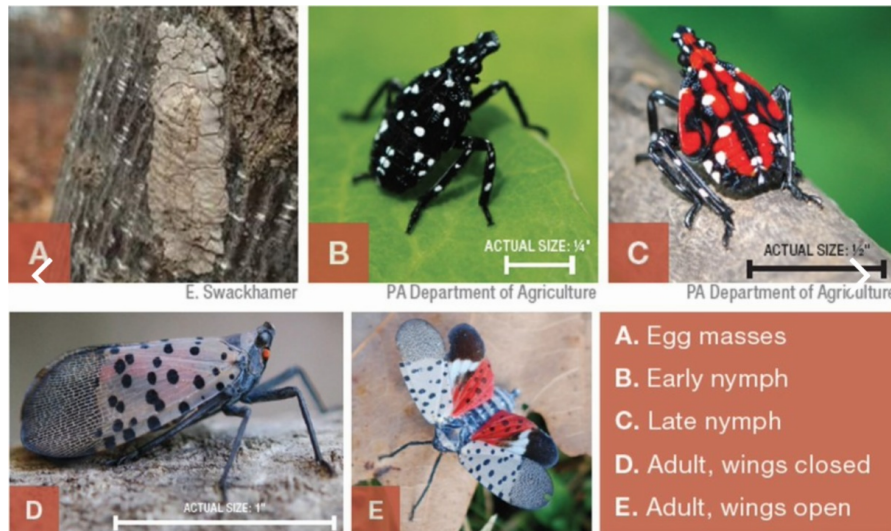
[Hilltop Native Garden](#)
[Norcross Wildlife Sanctuary Gardens](#)
[Grow Native Massachusetts' Experts Videos](#)



Did You Know.....?

Stop the Spotted Lanternfly!

The spotted lanternfly attacks over 70 different plants, including economically important crops (grapes, apples, hops), forest and shade trees (maple, willow, birch), and the invasive tree of heaven. This pest has now been spotted in several parts of Massachusetts. Show no mercy if you see this pest. Kill and [report to the state](#).



Follow GCFM on Facebook

